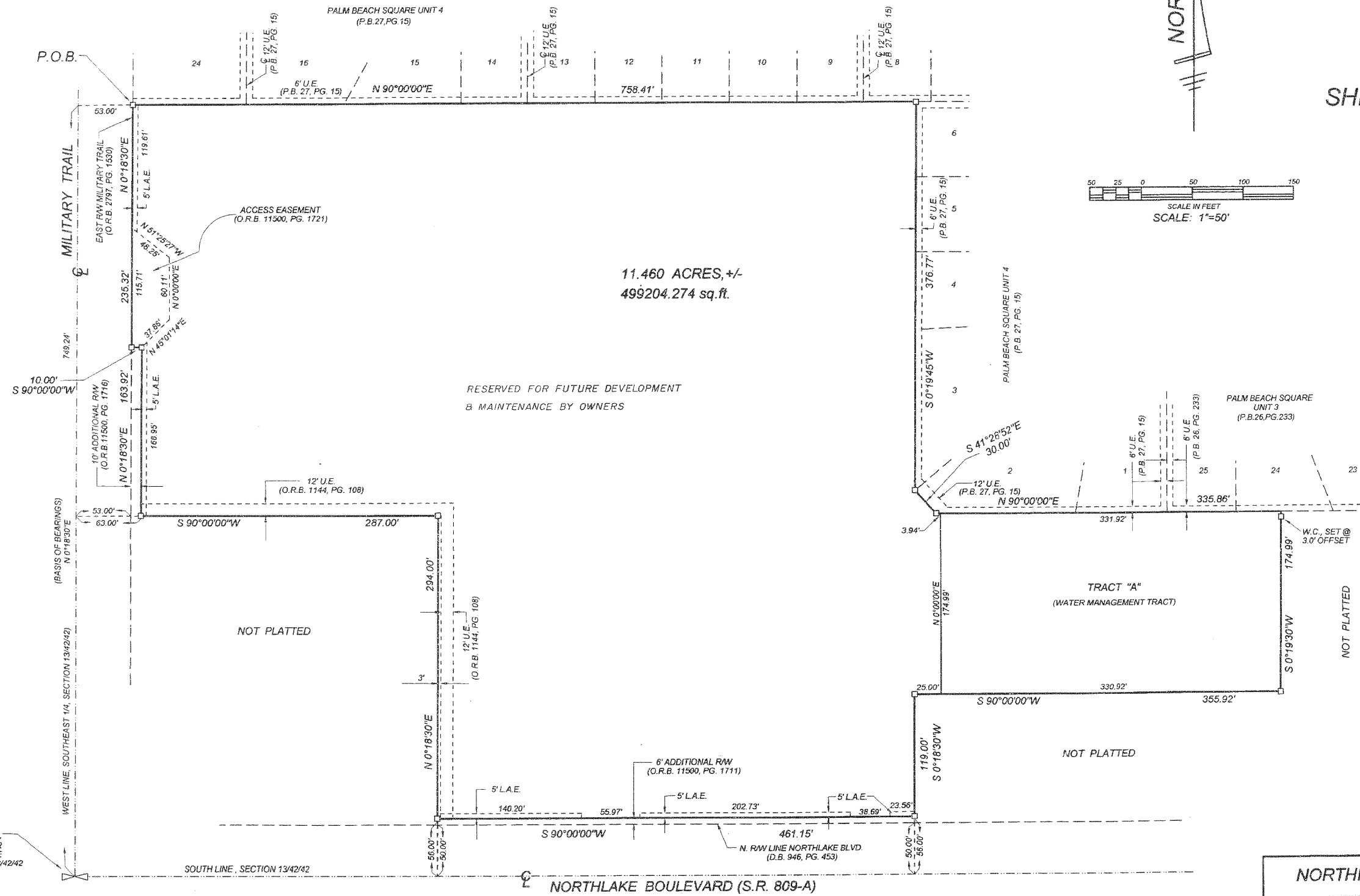
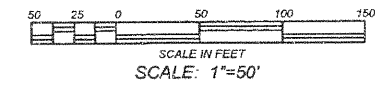


NORTHMIL PLAZA PLAT

BEING A PORTION OF SECTION 13, TOWNSHIP 42 SOUTH,
AND RANGE 42 EAST, CITY OF PALM BEACH GARDENS,
PALM BEACH COUNTY, FLORIDA.
NOVEMBER, 1999

SHEET 2 OF 2



NORTHMIL PLAZA PLAT			
FIELD:	JOB No. 84-3707H	F.B.:	PG.:
OFFICE: R.C.	DATE: NOV., 1999	DWG. No.:	84-370-4
CKD:	REF:	SHEET 2 OF 2	